



MEASUREMENT NOISE AND OCTAVE BAND			78,00 dB(A) 1 mt
Directive 2000/14/CE	Test Date	26/06/2015	103 Lwa Norm
Directive 2005/88/CE	Test Code		
Royal Decree 212/2002	Genset Code		

Model	HMW-2200T5	Serial Number Genset	1657032
Bodywork	Contenedor 40Ft (Radiador Remoto)		
Characteristics	Entradas Laterales y salidas superiores. Con variador		
Engine	MTU 16V4000G63 (Nº 527111814)	Manufactu. Year	2015
Alternator	Leroy Somer LSA51,2-VL95 (Nº 606812-1)		

Power	2302,5	kVA	L1 (Long)	12192	mm
Power PRP	1842	kW	L2 (Width)	2438	mm
% Prime Power	75	% Load	L3 (High)	2896	mm
Power Test	1381,5	Power (kW)	Ambient Temperature	30	°C

Measure. Equip.	Trademark	Cesva	Number of Microphones	6
	Model	SC-160	Distance Microphone Placement (m)	1,00
	Weighting	A	Chosen Radius, Semi Sphere Method	16,00

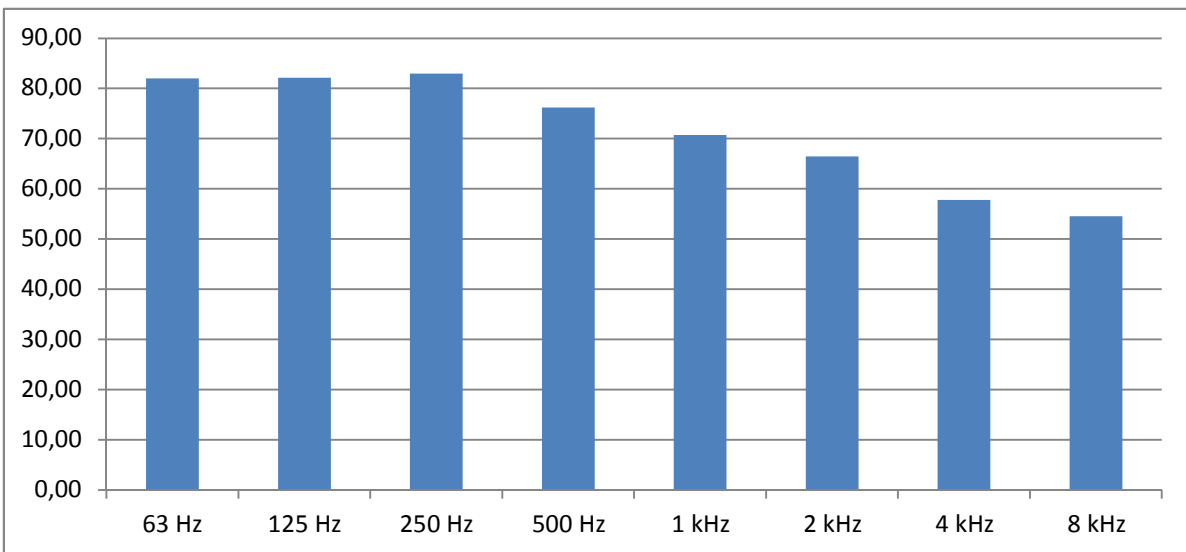
Lpf averag. (dBA)	78,00	@	1	meters
-------------------	-------	---	---	--------

Uncertainty (U)	2,4	Standard Deviation	1,5
		Coverage Factor (k)	1,6

Acoustic Power Level Rounded				
By Directive 2000/14/CE		Lwa	Lwa Guaranteed	Compliance of Norm
98		100	103	Mark Only

Distance "d" (mts)	1	4	7	10	16
Perimeter dB(A)	78,00	74,65	71,90	69,74	66,58
Semisphere dB(A)	92,15	80,11	75,25	72,15	68,07

Octave Band	63 Hz	125 Hz	250 Hz	500 Hz
Average	81,99	82,11	82,93	76,24
	1 kHz	2 kHz	4 kHz	8 kHz
	70,72	66,46	57,78	54,54



This test was done with a VSD installed to control radiator fan speed, at 75% load and with 30°C ambient temperature, the frequency on the fan motor was 30,6Hz (891,1rpm).