
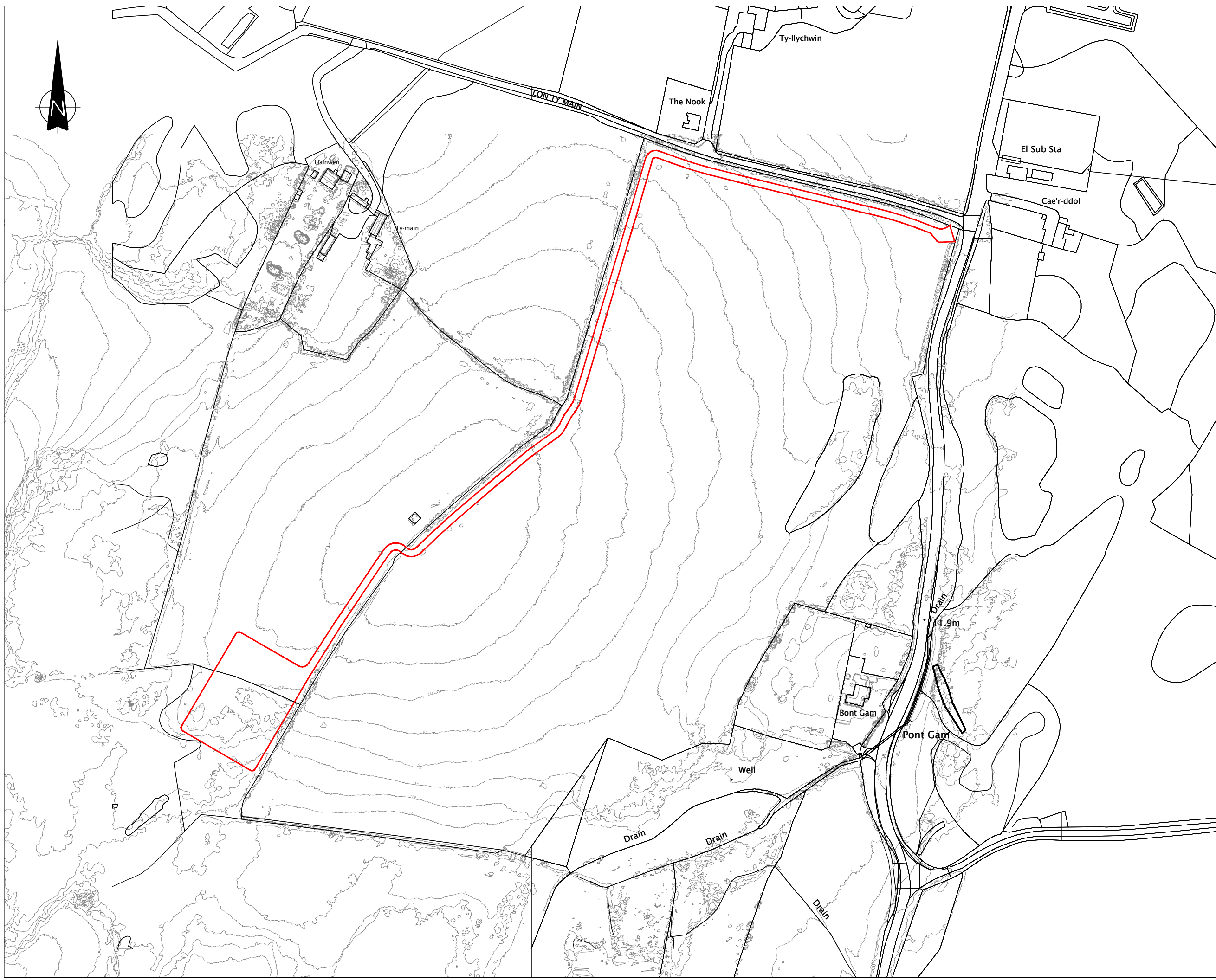



THIS INFORMATION IS CONFIDENTIAL AND THE PROPERTY OF STRATUS ENVIRONMENTAL LIMITED. IT IS RELEASED ON CONDITION THAT NONE OF THE INFORMATION SHALL BE DISCLOSED TO ANY THIRD PARTY OR REPRODUCED IN WHOLE OR PART WITHOUT THE PRIOR CONSENT IN WRITING OF STRATUS ENVIRONMENTAL LIMITED

KEY  
 SITE BOUNDARY  
 5,421m<sup>2</sup> - 0.54Ha



REV	DESCRIPTION	DATE	BY

CLIENT




STRATUS ENVIRONMENTAL LIMITED  
 4245 PARK APPROACH  
 THORPE PARK  
 LEEDS  
 LS15 8GB  
 T: 0113 232 8571  
 E: info@stratus-environmental.co.uk  
 W: stratus-environmental.co.uk

JOB TITLE  
**TREFSLEG STOR FACILITY**

DRAWING TITLE  
**SITE BOUNDARY**

DATE	11/4/2016	DATE	11/4/2016
S.T		F.W	
SCALE	1:2000	SHEET	A3
DRAWING NUMBER	SRE1033/1/02	REVISION	0