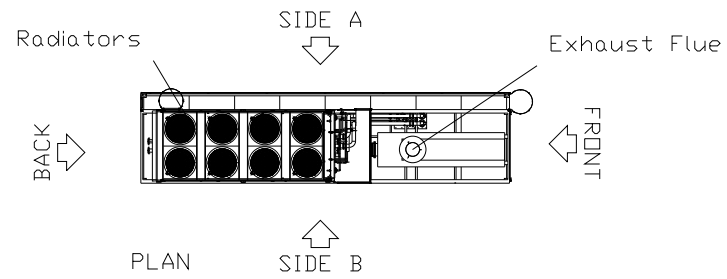
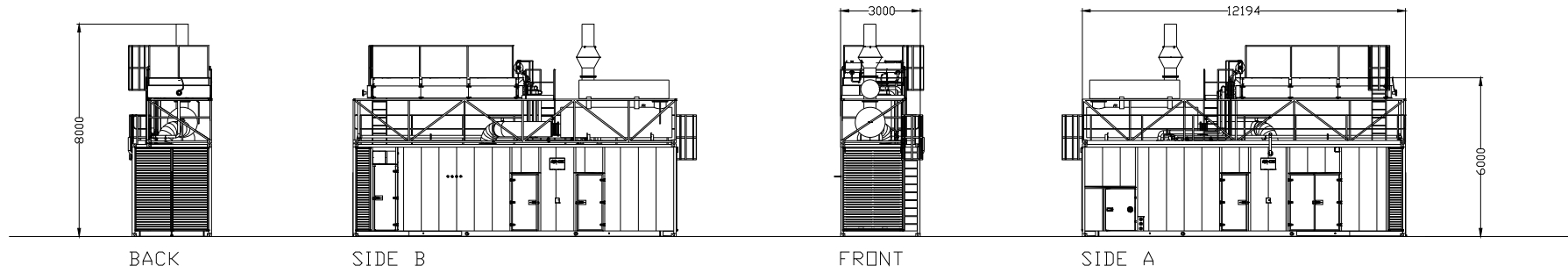


ENGINE CONTAINER

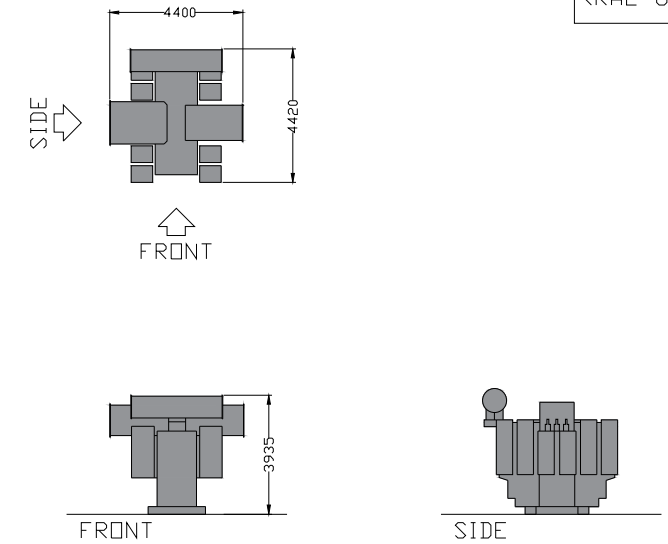


Metal container to be finished in matt fern green (RAL 6025).
Stacks and radiators to be finished in matt silver grey (RAL 7001).



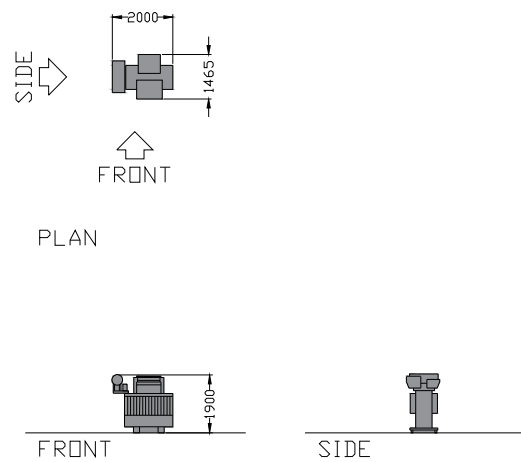
MAIN TRANSFORMER COMPOUND

To be finished in matt fern green (RAL 6025).



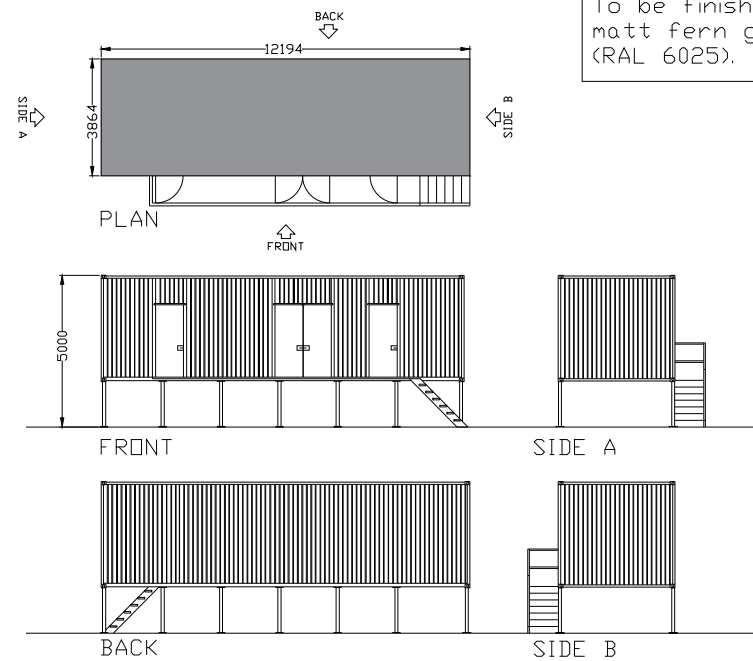
AUXILIARY TRANSFORMER

To be finished in matt fern green (RAL 6025).



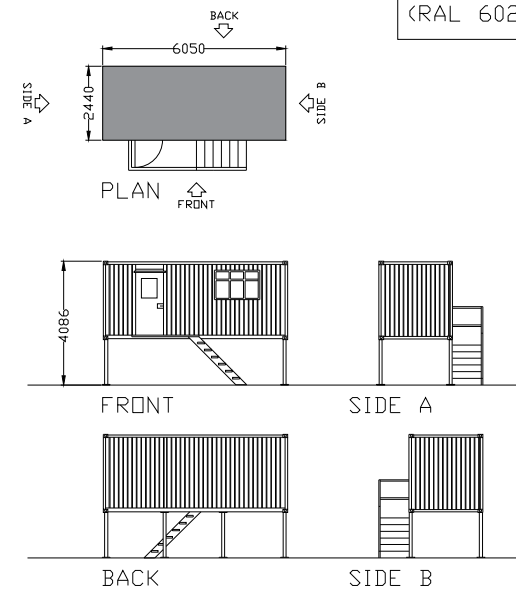
HV/LV SWITCH ROOM

To be finished in matt fern green (RAL 6025).



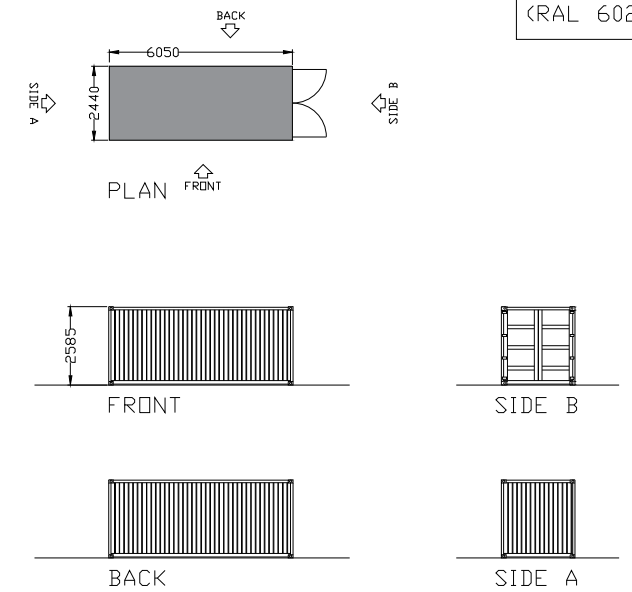
CONTROL ROOM

To be finished in matt fern green (RAL 6025).



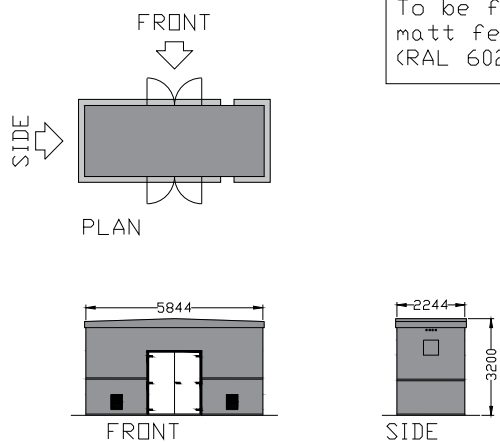
STORE ROOM

To be finished in matt fern green (RAL 6025).



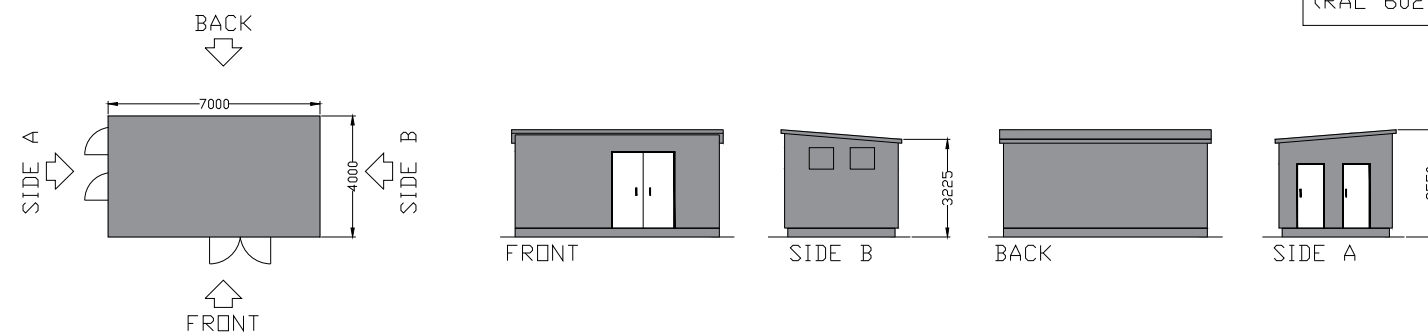
GAS RECEPTION KIOSK

To be finished in matt fern green (RAL 6025).

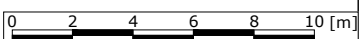
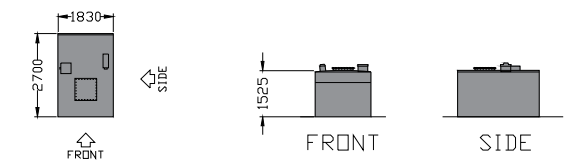


DND METERING STATION

GRP housing to be finished in matt fern green (RAL 6025)



Lube Oil Bulk Storage Tank



Site address: Land on the North West of Coity Road, Bridgend, CF31 1NW		ukpowerreserve SUPPORTING A RENEWABLE FUTURE	
Drawing: [18031.103](Coity Road) Elevations & Block Plan (Rev.1a)		6th Floor, Radcliffe House, Blenheim Court, Solihull, West Midlands, B91 2AA	
Date: 22/05/2018	Revision 1a	Drawn by: PH	Reviewed by:
PLAN NOT TO BE USED FOR CONSTRUCTION		Scale: 1:250 @ A3	